

2004.



**ASBESTOS SURVEY FOR**

**Galleon Centre**

**AT**

**99 Titchfield Street,  
Kilmarnock.  
KA1 1QY**



**Surveyed by Carl Ashton**

## Index

### Section 1

- i. Introduction
- ii. Variations
- iii. Areas Included
- iv. Areas Excluded
- v. Survey Technique
- vi. Survey Notes
- vii. Survey Objectives
- viii. Survey Drawings
- ix. Survey Caveat
- x. Survey Recommendations

### Section 2

- i. Bulk Identification Reports

### Section 3

- i. Analysis Charts
- ii. Material Assessment History
- iii. Material Assessment Summary by Asbestos Type
- iv. Material Assessment Summary by Risk Band
- v. Material Assessment Summary by Risk Score
- vi. Material Assessment Summary by Area
- vii. Material Assessment Summary by Floor

### Section 4

- i. Material and Priority Assessment Records
-

## Section 1

1. [Introduction](#)
2. [Variations](#)
3. [Areas Included](#)
4. [Areas Excluded](#)
5. [Survey Technique](#)
6. [Survey Notes](#)
7. [Survey Objectives](#)
8. [Survey Drawings](#)
9. [Survey Caveat](#)
10. [Survey Recommendations](#)

## **INTRODUCTION**

Instructions were received from David Hasson on behalf of the Galleon Centre to undertake Type 2 Asbestos Survey to the site located at Kilmarnock, in accordance with the duty holders responsibilities as per Control of Asbestos at Work Regulations 2002.

The Survey was carried out on the 08/12/04 by C. Ashton.

## **VARIATIONS**

While the survey was conducted in consideration of the guidance provided with HSE Guidance note MDHS100 (July2001) the following variations were necessary:

All new structures constructed after 2000 were not sampled unless suspect materials were apparent. This report is valid until alteration works have been carried out. Care should be taken by consulting COSHH assessments of products to be introduced to ensure no asbestos containing materials are introduced.

No variations were required. The site was partially occupied during our survey.

## **AREAS INCLUDED**

The survey included the following:

Schedule: Internally and externally all levels were visually inspected and only suspect materials were sampled.

## **AREAS EXCLUDED**

The survey excluded the following:

Schedule: Only areas of no access were excluded and are duly noted.

No access to the following areas;

Plant Room above Female squash area, Function Suite, Games Hall, Female Staff Room, Lift.

Electrical appliances/units were not opened up for inspection, due to safety reasons. All suspect units have been duly noted within the report.

## **SURVEY TECHNIQUES**

Materials of a similar type were only occasionally sampled and it was assumed that other surfaces identical to where the sample was taken, was of a similar composition.

Photographs were taken at all of the sample locations (unless otherwise stated).

Samples were returned to the Main Laboratory for analysis.

Asbestos Bulk Sample Analysis is conducted by using Polarised Light and Dispersion Staining Techniques. Dispersion Staining is used to describe the colour effects produced when a transparent colourless particle or fibre is immersed in a liquid having a refractive index near to that of the particle or fibre, and is viewed under a microscope using transmitted white light (based on HSE Publication MDHS 77).

## **SURVEY NOTES**

Whilst every effort was made to locate the ceiling panels, wall partitions and other panels, which may have been constructed from asbestos boarding, none other than those detailed were found. Some may have been missed due to repairs, alterations etc, where false and other finishes have been applied or where different specifications (including a possible mixture of asbestos and non-asbestos) panels have been used in the same area. Only by sampling each panel would the composition of all the materials be known. This was clearly not practical in terms of cost or time.

No air monitoring was carried out whilst the survey was undertaken and therefore care was taken not to cause disturbance of fibre or contamination of clean surfaces.

This report has been written with reference to the various Guidance Notes etc, issued, and current at the date of this report and describes circumstances at the site on the date the investigation took place.

Where similar items exist in the building, only one or two samples have been taken to ascertain the material content. It was assumed that similar products were of the same material. Only random sampling was carried out.

Any person undertaking work within the buildings should be told of the presence of asbestos. This briefing also applies to any other person associated with the site, including staff, sub-contractors and others.

The diagrams in the report are not to scale and are illustrative only to indicate approximate locations. The descriptions used are for location identification purposes

All the recommendations described in this report are based upon assumptions made after consideration of the type of material, condition of the material, its location, analysis result and type of use the area is thought to be subjected to. However, statutory authorities or others, could require amendments based on local knowledge, change in legislation, change in use or indeed, other conditions of criteria.

Equipment, machinery, ducting etc were not moved, opened up or examined for the purpose of this investigation except in the odd occasion where hatches were available

### **SURVEY OBJECTIVES**

To carry out a building survey to locate suspected asbestos containing materials.

To collect sufficient information on the presence, location and condition of asbestos material.

To calculate material assessments for all identified and presumed asbestos containing material

To produce a report in a database format, indicating areas containing identified and presumed ACM's, together with relevant information on the types of asbestos found and their condition, thus provide sufficient information to enable the person responsible for the building, to formulate an ongoing asbestos management plan.

To ensure construction companies who may wish to tender for any works at the said premises are well informed thus enabling them to manage any existing asbestos containing materials during any said works both safely and cost effectively.

### **SURVEY DRAWINGS**

## **SURVEY CAVEAT**

This report is based upon a non-destructive inspection of an unfamiliar site. During the course of the survey all reasonable efforts were made to identify the physical presence of materials containing asbestos within the areas of the building which are subject to future refurbishment works. It is known that asbestos materials are frequently concealed within the fabric of buildings or within sealed building voids so that it is not possible to regard the findings of any survey as being definitive. It must always remain a possibility that further asbestos containing materials may be found during refurbishment or demolition activities. For reasons set out in this report, the results cannot give an assurance that all asbestos materials have been found and must not be thought to do so. The nature of the survey was a non-destructive inspection at key locations of accessible voids and areas. From the evidence of the inspections and of the sampling and analysis undertaken, it is clear that asbestos containing materials are either present or within or associated with various areas as detailed in the report. We recommend that samples be taken of suspect materials which may be uncovered within the listed areas or within the areas of the site which were not included in this survey.

## **SURVEY RECOMMENDATIONS**

### **Material Assessment and Algorithm**

The material assessment is an assessment of the condition of the ACM, or the presumed ACM, and the likelihood of it releasing fibres in the event of it being disturbed in some way. This material assessment will give a good initial guide to the priority for management, as it will identify the materials, which will most readily release airborne fibres if disturbed. However, there are other factors to take into account when prioritising action.

MDHS100 recommends the use of an algorithm to carry out the material assessment, and contains an example. The algorithm is a numerical way of taking into account several influencing factors, giving each factor considered a score. These scores can then be totaled to give a material assessment score. The use of algorithms is not infallible, but the assessment process is clear for all to see, so if discrepancies arise, it should be possible to track back through the assessment process to find the root of the error. The algorithm shown in MDHS100 considers four parameters that determine the risk from ACM: that is the ability to release fibres if disturbed. These four parameters are:

Product type;  
Extent of damage;  
Surface treatment; and  
Asbestos type

Each of the parameters is scored and added to give a total score between 2 and 25:

Materials with scores of 19 or more should be regarded as high risk with a significant potential to release fibres if disturbed;

Those with a score between 14 and 18 are regarded as medium risk;

Materials with a score between 10 and 13 are low risk; and

Scores of 9 or less are very low risk.

### **PRIORITY ASSESSMENT AND ALGORITHM**

The material assessment identifies the high-risk materials, that is, those which will most readily release airborne fibres if disturbed. It does not automatically follow that those materials assigned the highest score in the material assessment will be the materials that should be given priority for remedial action. Management priority must be determined by carrying out a risk assessment which will also take into account factors such as:

Maintenance activity;  
Occupant activity;  
Likelihood of disturbance;  
Human exposure potential.

**THE RISK ASSESSMENT INCLUDES A MATERIAL ASSESSMENT AND A PRIORITY ASSESSMENT.**

**THE MATERIAL ASSESSMENT LOOKS AT THE TYPE AND CONDITION OF THE ACM AND THE EASE WITH WHICH IT WILL RELEASE FIBRES IF DISTURBED.**

**THE PRIORITY ASSESSMENT LOOKS AT THE LIKELIHOOD OF SOMEONE DISTURBING THE ACM.**

The risk assessment can only be carried out with detailed knowledge of all the above. Although a surveyor may have some of the information which will contribute to the risk assessment and may be part of an assessment team, you, as the duty holder under CAW, are required to make the risk assessment, using the information given in the survey report and your detailed knowledge of the activities carried out within your premises. The risk assessment will form the basis of the management plan, so it is important that it is accurate.

#### MAINTENANCE ACTIVITY

The first and most important factor which must be taken into consideration is the level of maintenance activity likely to be taking place in an area. Maintenance trades such as plumbers and electricians are the group who the duty to manage is primarily trying to protect. There are two types of maintenance activity, planned and unplanned. Planned work can be assessed and carried out using procedures and controls to reduce exposure to asbestos. Unplanned work requires the situation to be dealt with as found and the controls that can be applied may be more limited. The frequency of maintenance activities also need to be taken into account in deciding what management action is appropriate.

#### OCCUPANT ACTIVITY

The activities carried out in an area will have an impact on the risk assessment. When carrying out a risk assessment the main type of use of an area and the activities taking place within it should be taken into account. For example a little used storeroom or an attic will rarely be accessed and so any asbestos is unlikely to be disturbed. At the other end of the scale, in a warehouse lined with asbestos insulating board panels, with frequent vehicular movements, the potential for disturbance of ACMs is reasonably high and this would be a significant factor in the risk assessment. As well as the normal everyday activities taking place in an area, any secondary activities will need to be taken into account.

#### LIKELIHOOD OF DISTURBANCE

The two factors that will determine the likelihood of disturbance are the extent or amount of the ACM and its accessibility/vulnerability. For example, asbestos soffits outdoors are generally inaccessible without the use of ladders or scaffolding, are unlikely to be disturbed. The asbestos cement roof of a hospital ward is also unlikely to be disturbed, but its extent would need to be taken into account in any risk assessment. However if the same ward had asbestos panels on the walls they would be much more likely to be disturbed by trolley/bed movements.

#### HUMAN EXPOSURE POTENTIAL

The human exposure potential depends on three factors: the number of occupants of an area, the frequency of use of the area, and the average time each area is in use. For example, a school boiler room is likely to be unoccupied, but may be visited daily for a few minutes. The potential for exposure is much less than say in a classroom lined with asbestos insulating board paneling, which is occupied daily for six hours by 30 pupils and a teacher.

#### PRIORITY ASSESSMENT ALGORITHMS

Taking all these factors into account in a logical, consistent manner is difficult. Using an algorithm will help you to produce priority assessments that have taken the factors into account in a consistent way. The number of factors relevant at any one site needs to be carefully considered, as the more factors included in an algorithm, the lower the influence of the most important risk factors becomes, and this may produce anomalies. For this reason it is recommended that the number of factors that are scored is limited to four, the same as the number of factors in the material assessment. There is no single set of factors that can be recommended that will apply equally to all types of premises. Therefore four general headings have been used and one or more factors can be taken into account and averaged under each heading to suit the circumstances. If you choose to use more than one factor under a general heading, then average the scores under that heading, rounding up where necessary.

The scores from the material assessment (i.e. the condition of the ACM or presumed ACM) are added to the scores of the priority assessment (the likelihood of disturbance), to give the overall risk assessment. Risk assessment scores for different ACMs can then be compared to develop your action plan. In many circumstances the scores will be similar, making decisions more difficult. For example a boiler house with asbestos pipe work insulation in poor condition may get the same or similar risk assessment score to an office with asbestos insulating board in reasonably good condition. This is simply because the ACM in the boiler house received a higher score than the ACM in the office because the ACM in the boiler house was in poor condition. However, the priority assessment for the office will get a higher score than the boiler house since the office is occupied more often. Add the scores together for the material and priority assessments, and you get similar scores. If this is the case then you may decide that the office needs doing first because it is used daily. On the other hand you may decide that the poor condition of the ACM in the boiler house means that it should be done first. If the office was a classroom, the young age of the occupants may be a deciding factor. Algorithms are provided to help you, but they are best guesses and will often require you to make your own additional judgements.

## Section 2

### 1. Bulk Identification Report



# TVS Analysis

Suite 9B, Cavendish House, The Village, Birchwood Technology Park, Birchwood,  
Warrington, Cheshire. WA3 6BU.

Telephone/Fax: (01925) 811622

E-mail: [tvsanalysis@btconnect.com](mailto:tvsanalysis@btconnect.com)



2684

## CERTIFICATE OF ASBESTOS FIBRE IDENTIFICATION.

Client Name and Address: MPL Environmental Solutions Limited, 1<sup>st</sup> Floor, 39-41 Victoria Road, Widnes,  
Cheshire. WA8 7RP.

Site Reference: Galleon Center, 99 Titchfield Street, Kilmamock

Date Received: 15/12/04

Date Analysed: 15/12/04

Project Number: TVS/04/871

Analyst: S Thomas

Sample Number		Sample Location	Description of Product	Content
Lab	Client			
001	03039	1 <sup>st</sup> Floor Bonspiel Corridor Next to Fire Door	Floor Tile	No Asbestos Detected
002	03040	1 <sup>st</sup> Floor Bonspiel Bar Servery	Textured Coating	No Asbestos Detected
003	03041	1 <sup>st</sup> Floor Squash Court (Viewing)	Floor Tile	No Asbestos Detected
004	03042	Ground Floor Bar/Kitchen Area	Textured Coating	No Asbestos Detected
005	03043	Ground Floor Cleaning Storeroom	Floor Tile	No Asbestos Detected

Approved: Sign.....  
Print..... N. V. S. E.....  
(Director)

Date: 16/12/04  
(Issued)

Tr = Trace = <5%  
Mod = Moderate = 5-25%  
Sub = Substantial = >25%

Samples detailed above have been analysed qualitatively for asbestos by polarized light & dispersion staining as described in our in-house procedures (Appendix 1 of our 'Quality Manual Policy and Procedures'), based on the content of MDHS 77. Quantification of asbestos & Description of Product is outside the scope of our UKAS accreditation. TVS Analysis Ltd accepts no responsibility for errors which may have arisen during sampling or transportation of samples by external clients.

**BULK IDENTIFICATION REPORT**

**CLIENT** Galleon Centre,  
99 Titchfield Street,  
Kilmarnock.  
KA1 1QY

**SITE** 99 Titchfield Street,  
Kilmarnock.  
KA1 1QY

**ANALYTICAL TECHNIQUE**

Stereo and polarised light microscopy together with dispersion staining techniques based on MDHS 77.

**NO. SAMPLES TAKEN FOR ANALYSIS**

19

**DATE FIRST SAMPLE TAKEN**

16/12/04

**DATE LAST SAMPLE TAKEN**

16/12/04

<b>REF.</b>	<b>SAMPLE LOCATION</b>	<b>MATERIAL TYPE</b>
22	First floor, Fitness Room, General Construction	No Asbestos Located
23	First floor, Male Changing Room, General Construction	No Asbestos Located
24	First floor, Plant Room, General Construction	No Asbestos Located
25	First floor, Bonspiel Hallway, Floor tile	NADIS
26	First floor, Bonspiel Bar, Textured coating	NADIS
27	First floor, Service Lift Motor Room, General Construction	No Asbestos Located
28	First floor, Squash Court Viewing Area, Floor tile	NADIS
29	Ground floor, Reception Office, Safe	Amosite/Chrysotile/Crocidolite
30	Ground floor, Bowling Area, General Construction	No Asbestos Located
31	Ground floor, Bowling Office, Electrical Panel	Amosite/Chrysotile/Crocidolite
32	Ground floor, Bar/Kitchen, Textured coating	NADIS
33	Ground floor, Kitchen, Electrical Panel	Amosite/Chrysotile/Crocidolite
34	Ground floor, Plant Room, General Construction	No Asbestos Located
35	Ground floor, Cleaning Store, Floor tile	NADIS
36	Ground floor, Sauna, General Construction	No Asbestos Located
37	Ground floor, Ice Rink Office, General Construction	No Asbestos Located
38	Ground floor, Ice Rink Hall, General Construction	No Asbestos Located
39	Ground floor, Plant Room Motors, General Construction	No Asbestos Located
40	Ground floor, Games Room Store, Electrical Panel	Amosite/Chrysotile/Crocidolite

NADIS stands for No Asbestos Detected In Sample (Negative)

Chrysotile = white asbestos, Amosite = brown asbestos, Crocidolite = blue asbestos.

This certificate is relative to the sample analysed only and may not represent or guarantee that the balance of the materials from which the samples were taken is of equal proportion or contains the same constituents as those in the samples tested. All original certificates will be held for 40 years in the archives of Trojan Services Limited.

**DATE** 05/01/05

**ISSUED BY** Carl Ashton

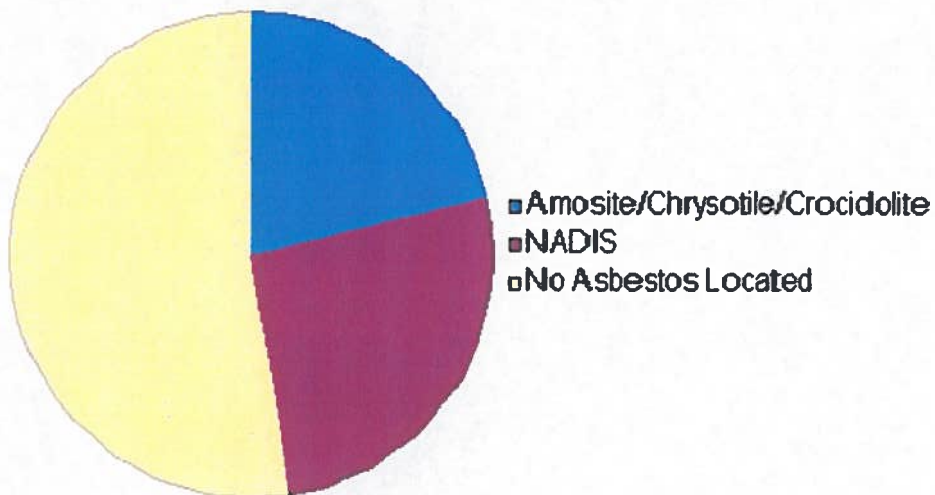
For and on behalf of Trojan Services Limited  
First Floor  
10 St. Andrews Road South  
Lytham St. Annes  
Lancashire  
FY8 1SR

## Section 3

1. [Analysis Charts](#)
2. [Material Assessment History](#)
3. [Material Assessment Summary by Asbestos Type](#)
4. [Material Assessment Summary by Risk Band](#)
5. [Material Assessment Summary by Risk Score](#)
6. [Material Assessment Summary by Area](#)
7. [Material Assessment Summary by Floor](#)

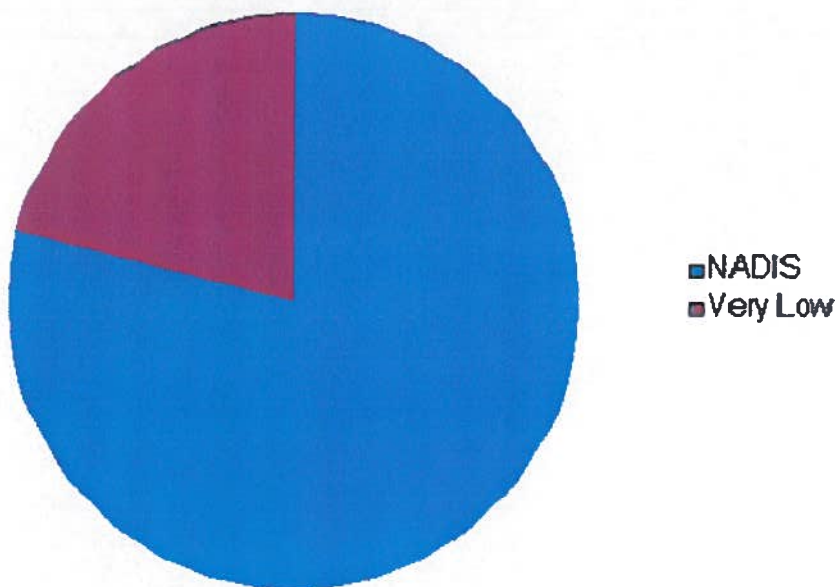
**ANALYSIS CHARTS**

**Analysis by Asbestos Type**

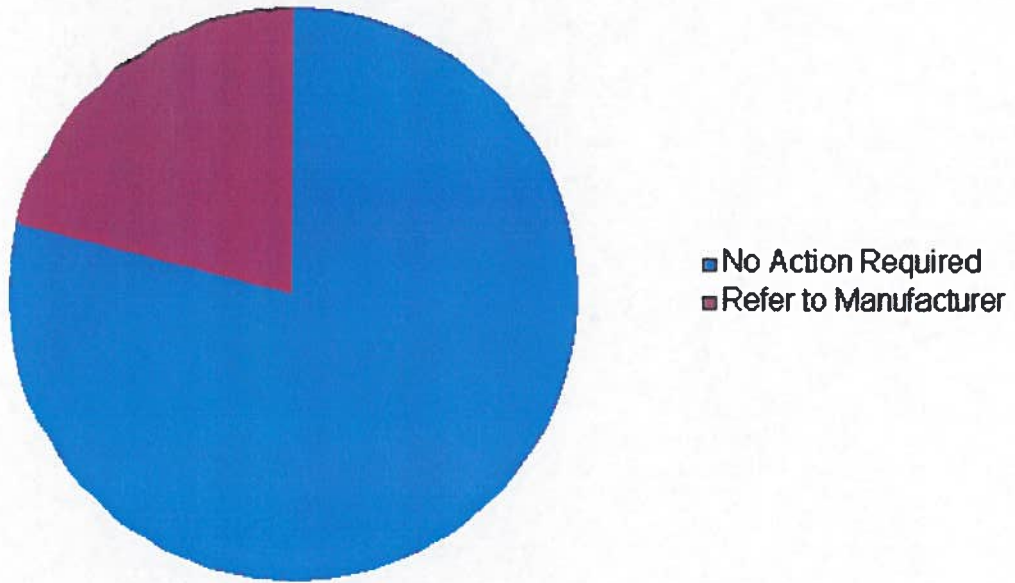


---

**Analysis by Material Risk Band**



### Analysis by Action



## Asbestos Survey Report

**MATERIAL ASSESSMENT HISTORY**

Sample Date	Sample Ref.	Area	Floor	Room	Component	Asbestos Type	Risk Score	Recommendations	Action	Survey Type
16/12/04	22	Main Building	First floor	Fitness Room	General Construction	No Asbestos Located	0		No Action Required	T2
16/12/04	23	Main Building	First floor	Male Changing Room	General Construction	No Asbestos Located	0		No Action Required	T2
16/12/04	24	Main Building	First floor	Plant Room	General Construction	No Asbestos Located	0		No Action Required	T2
16/12/04	25	Main Building	First floor	Bonspiel Hallway	Floor tile	NADIS	0	Lab sample no. 03039	No Action Required	T2
16/12/04	26	Main Building	First floor	Bonspiel Bar	Textured coating	NADIS	0	Lab sample no. 03040	No Action Required	T2
16/12/04	27	Main Building	First floor	Service Lift Motor Room	General Construction	No Asbestos Located	0		No Action Required	T2
16/12/04	28	Main Building	First floor	Squash Court Viewing Area	Floor tile	NADIS	0	Lab sample no. 03041	No Action Required	T2
16/12/04	29	Main Building	Ground floor	Reception Office	Safe	Amosite/Chrysotile/Crocidolite	6	Some older units had materials within, that contained asbestos. Safe also located to the Managers Office.	Refer to Manufacturer	T2
16/12/04	30	Main Building	Ground floor	Bowling Area	General Construction	No Asbestos Located	0		No Action Required	T2
16/12/04	31	Main Building	Ground floor	Bowling Office	Electrical Panel	Amosite/Chrysotile/Crocidolite	5	Some older panels had woven flash pads within that sometimes contained asbestos.	Refer to Manufacturer	T2
16/12/04	32	Main Building	Ground floor	Bar/Kitchen	Textured coating	NADIS	0	Lab sample no. 03042	No Action Required	T2
16/12/04	33	Main Building	Ground floor	Kitchen	Electrical Panel	Amosite/Chrysotile/Crocidolite	5	Some older panels had woven flash pads within that sometimes contained asbestos.	Refer to Manufacturer	T2

16/12/04	34	Main Building	Ground floor	Plant Room	General Construction	No Asbestos Located	0	No Action Required	T2
16/12/04	35	Main Building	Ground floor	Cleaning Store	Floor tile	NADIS	0	Lab sample no. 03043	T2
16/12/04	36	Main Building	Ground floor	Sauna	General Construction	No Asbestos Located	0	No Action Required	T2
16/12/04	37	Main Building	Ground floor	Ice Rink Office	General Construction	No Asbestos Located	0	No Action Required	T2
16/12/04	38	Main Building	Ground floor	Ice Rink Hall	General Construction	No Asbestos Located	0	No Action Required	T2
16/12/04	39	Main Building	Ground floor	Plant Room Motors	General Construction	No Asbestos Located	0	No Action Required	T2
16/12/04	40	Main Building	Ground floor	Games Room Store	Electrical Panel	Amosite/Chrysotile/Crocidolite	5	Some older panels had woven flash pads within that sometimes contained asbestos.	Refer to Manufacturer



**MATERIAL ASSESSMENT BY ASBESTOS TYPE**

Sample Ref.	Sample Date	Area	Floor	Room	Component	Risk Score	Recommendations	Action	Survey Type
<b><u>Amosite/Chrysotile/Crocidolite</u></b>									
29	16/12/04	Main Building	Ground floor	Reception Office	Safe	6	Some older units had materials within, that contained asbestos.	Refer to Manufacturer	T2
31	16/12/04	Main Building	Ground floor	Bowling Office	Electrical Panel	5	Safe also located to the Managers Office. Some older panels had woven flash pads within that sometimes contained asbestos.	Refer to Manufacturer	T2
33	16/12/04	Main Building	Ground floor	Kitchen	Electrical Panel	5	Some older panels had woven flash pads within that sometimes contained asbestos.	Refer to Manufacturer	T2
40	16/12/04	Main Building	Ground floor	Games Room Store	Electrical Panel	5	Some older panels had woven flash pads within that sometimes contained asbestos.	Refer to Manufacturer	T2
<b><u>NADIS</u></b>									
25	16/12/04	Main Building	First floor	Bonspiel Hallway	Floor tile	0	Lab sample no. 03039	No Action Required	T2
26	16/12/04	Main Building	First floor	Bonspiel Bar	Textured coating	0	Lab sample no. 03040	No Action Required	T2
28	16/12/04	Main Building	First floor	Squash Court Viewing Area	Floor tile	0	Lab sample no. 03041	No Action Required	T2
32	16/12/04	Main Building	Ground floor	Bar/Kitchen	Textured coating	0	Lab sample no. 03042	No Action Required	T2
35	16/12/04	Main Building	Ground floor	Cleaning Store	Floor tile	0	Lab sample no. 03043	No Action Required	T2
<b><u>No Asbestos Located</u></b>									
22	16/12/04	Main Building	First floor	Fitness Room	General Construction	0		No Action Required	T2
23	16/12/04	Main Building	First floor	Male Changing Room	General Construction	0		No Action Required	T2



24	16/12/04	Main Building	First floor	Plant Room	General Construction	0	No Action Required	T2
27	16/12/04	Main Building	First floor	Service Lift Motor Room	General Construction	0	No Action Required	T2
30	16/12/04	Main Building	Ground floor	Bowling Area	General Construction	0	No Action Required	T2
34	16/12/04	Main Building	Ground floor	Plant Room	General Construction	0	No Action Required	T2
36	16/12/04	Main Building	Ground floor	Sauna	General Construction	0	No Action Required	T2
37	16/12/04	Main Building	Ground floor	Ice Rink Office	General Construction	0	No Action Required	T2
38	16/12/04	Main Building	Ground floor	Ice Rink Hall	General Construction	0	No Action Required	T2
39	16/12/04	Main Building	Ground floor	Plant Room Motors	General Construction	0	No Action Required	T2

**MATERIAL ASSESSMENT BY RISK BAND**

Sample Ref.	Sample Date	Area	Floor	Room	Component	Asbestos Type	Risk Score	Recommendations	Action	Survey Type
<b>NADIS</b>										
22	16/12/04	Main Building	First floor	Fitness Room	General Construction	No Asbestos Located	0		No Action Required	T2
23	16/12/04	Main Building	First floor	Male Changing Room	General Construction	No Asbestos Located	0		No Action Required	T2
24	16/12/04	Main Building	First floor	Plant Room	General Construction	No Asbestos Located	0		No Action Required	T2
25	16/12/04	Main Building	First floor	Bonspiel Hallway	Floor tile	NADIS	0	Lab sample no. 03039	No Action Required	T2
26	16/12/04	Main Building	First floor	Bonspiel Bar	Textured coating	NADIS	0	Lab sample no. 03040	No Action Required	T2
27	16/12/04	Main Building	First floor	Service Lift Motor Room	General Construction	No Asbestos Located	0		No Action Required	T2
28	16/12/04	Main Building	First floor	Squash Court Viewing Area	Floor tile	NADIS	0	Lab sample no. 03041	No Action Required	T2
30	16/12/04	Main Building	Ground floor	Bowling Area	General Construction	No Asbestos Located	0		No Action Required	T2
32	16/12/04	Main Building	Ground floor	Bar/Kitchen	Textured coating	NADIS	0	Lab sample no. 03042	No Action Required	T2
34	16/12/04	Main Building	Ground floor	Plant Room	General Construction	No Asbestos Located	0		No Action Required	T2
35	16/12/04	Main Building	Ground floor	Cleaning Store	Floor tile	NADIS	0	Lab sample no. 03043	No Action Required	T2
36	16/12/04	Main Building	Ground floor	Sauna	General Construction	No Asbestos Located	0		No Action Required	T2
37	16/12/04	Main Building	Ground floor	Ice Rink Office	General Construction	No Asbestos Located	0		No Action Required	T2
38	16/12/04	Main Building	Ground floor	Ice Rink Hall	General Construction	No Asbestos Located	0		No Action Required	T2

39	16/12/04	Main Building	Ground floor	Plant Room Motors	General Construction	No Asbestos Located	0		No Action Required	T2	
<b>Very Low</b>											
29	16/12/04	Main Building	Ground floor	Reception Office	Safe	Amosite/Chrysotile/Crocidolite	6	Some older units had materials within, that contained asbestos.	Refer to Manufacturer	T2	
								Safe also located to the Managers Office.			
31	16/12/04	Main Building	Ground floor	Bowling Office	Electrical Panel	Amosite/Chrysotile/Crocidolite	5	Some older panels had woven flash pads within that sometimes contained asbestos.	Refer to Manufacturer	T2	
33	16/12/04	Main Building	Ground floor	Kitchen	Electrical Panel	Amosite/Chrysotile/Crocidolite	5	Some older panels had woven flash pads within that sometimes contained asbestos.	Refer to Manufacturer	T2	
40	16/12/04	Main Building	Ground floor	Games Room Store	Electrical Panel	Amosite/Chrysotile/Crocidolite	5	Some older panels had woven flash pads within that sometimes contained asbestos.	Refer to Manufacturer	T2	

**MATERIAL ASSESSMENT BY RISK SCORE**

Sample Ref.	Sample Date	Area	Floor	Room	Component	Asbestos Type	Risk Score	Recommendations	Action	Survey Type
22	16/12/04	Main Building	First floor	Fitness Room	General Construction	No Asbestos Located	0		No Action Required	T2
23	16/12/04	Main Building	First floor	Male Changing Room	General Construction	No Asbestos Located	0		No Action Required	T2
24	16/12/04	Main Building	First floor	Plant Room	General Construction	No Asbestos Located	0		No Action Required	T2
25	16/12/04	Main Building	First floor	Bonspiel Hallway	Floor tile	NADIS	0	Lab sample no. 03039	No Action Required	T2
26	16/12/04	Main Building	First floor	Bonspiel Bar	Textured coating	NADIS	0	Lab sample no. 03040	No Action Required	T2
27	16/12/04	Main Building	First floor	Service Lift Motor Room	General Construction	No Asbestos Located	0		No Action Required	T2
28	16/12/04	Main Building	First floor	Squash Court Viewing Area	Floor tile	NADIS	0	Lab sample no. 03041	No Action Required	T2
30	16/12/04	Main Building	Ground floor	Bowling Area	General Construction	No Asbestos Located	0		No Action Required	T2
32	16/12/04	Main Building	Ground floor	Bar/Kitchen	Textured coating	NADIS	0	Lab sample no. 03042	No Action Required	T2
34	16/12/04	Main Building	Ground floor	Plant Room	General Construction	No Asbestos Located	0		No Action Required	T2
35	16/12/04	Main Building	Ground floor	Cleaning Store	Floor tile	NADIS	0	Lab sample no. 03043	No Action Required	T2
36	16/12/04	Main Building	Ground floor	Sauna	General Construction	No Asbestos Located	0		No Action Required	T2
37	16/12/04	Main Building	Ground floor	Ice Rink Office	General Construction	No Asbestos Located	0		No Action Required	T2
38	16/12/04	Main Building	Ground floor	Ice Rink Hall	General Construction	No Asbestos Located	0		No Action Required	T2
39	16/12/04	Main Building	Ground floor	Plant Room Motors	General Construction	No Asbestos Located	0		No Action Required	T2

Asbestos Survey Report

31	16/12/04	Main Building	Ground floor	Bowling Office	Electrical Panel	Amosite/Chrysotile/Crocidolite	5	Some older panels had woven flash pads within that sometimes contained asbestos.	Refer to Manufacturer	T2
33	16/12/04	Main Building	Ground floor	Kitchen	Electrical Panel	Amosite/Chrysotile/Crocidolite	5	Some older panels had woven flash pads within that sometimes contained asbestos.	Refer to Manufacturer	T2
40	16/12/04	Main Building	Ground floor	Games Room Store	Electrical Panel	Amosite/Chrysotile/Crocidolite	5	Some older panels had woven flash pads within that sometimes contained asbestos.	Refer to Manufacturer	T2
29	16/12/04	Main Building	Ground floor	Reception Office	Safe	Amosite/Chrysotile/Crocidolite	6	Some older units had materials within, that contained asbestos.  Safe also located to the Managers Office.	Refer to Manufacturer	T2

**MATERIAL ASSESSMENT BY AREA**

Sample Ref.	Sample Date	Floor	Room	Component	Asbestos Type	Risk Score	Recommendations	Action	Survey Type
<b>Main Building</b>									
22	16/12/04	First floor	Fitness Room	General Construction	No Asbestos Located	0		No Action Required	T2
23	16/12/04	First floor	Male Changing Room	General Construction	No Asbestos Located	0		No Action Required	T2
24	16/12/04	First floor	Plant Room	General Construction	No Asbestos Located	0		No Action Required	T2
25	16/12/04	First floor	Bonspiel Hallway	Floor tile	NADIS	0	Lab sample no. 03039	No Action Required	T2
26	16/12/04	First floor	Bonspiel Bar	Textured coating	NADIS	0	Lab sample no. 03040	No Action Required	T2
27	16/12/04	First floor	Service Lift Motor Room	General Construction	No Asbestos Located	0		No Action Required	T2
28	16/12/04	First floor	Squash Court Viewing Area	Floor tile	NADIS	0	Lab sample no. 03041	No Action Required	T2
29	16/12/04	Ground floor	Reception Office	Safe	Amosite/Chrysotile/Crocidolite	6	Some older units had materials within, that contained asbestos. Safe also located to the Managers Office.	Refer to Manufacturer	T2
30	16/12/04	Ground floor	Bowling Area	General Construction	No Asbestos Located	0		No Action Required	T2
31	16/12/04	Ground floor	Bowling Office	Electrical Panel	Amosite/Chrysotile/Crocidolite	5	Some older panels had woven flash pads within that sometimes contained asbestos.	Refer to Manufacturer	T2
32	16/12/04	Ground floor	Bar/Kitchen	Textured coating	NADIS	0	Lab sample no. 03042	No Action Required	T2
33	16/12/04	Ground floor	Kitchen	Electrical Panel	Amosite/Chrysotile/Crocidolite	5	Some older panels had woven flash pads within that sometimes contained asbestos.	Refer to Manufacturer	T2

Asbestos Survey Report

34	16/12/04	Ground floor	Plant Room	General Construction	No Asbestos Located	0	No Action Required	T2
35	16/12/04	Ground floor	Cleaning Store	Floor tile	NADIS	0	Lab sample no. 03043	T2
36	16/12/04	Ground floor	Sauna	General Construction	No Asbestos Located	0	No Action Required	T2
37	16/12/04	Ground floor	Ice Rink Office	General Construction	No Asbestos Located	0	No Action Required	T2
38	16/12/04	Ground floor	Ice Rink Hall	General Construction	No Asbestos Located	0	No Action Required	T2
39	16/12/04	Ground floor	Plant Room Motors	General Construction	No Asbestos Located	0	No Action Required	T2
40	16/12/04	Ground floor	Games Room Store	Electrical Panel	Amosite/Chrysotile/Crocidolite	5	Some older panels had woven flash pads within that sometimes contained asbestos.	Refer to Manufacturer T2

**MATERIAL ASSESSMENT BY FLOOR**

Sample Ref.	Sample Date	Area	Room	Component	Asbestos Type	Risk Score	Recommendations	Action	Survey Type
<b>First floor</b>									
22	16/12/04	Main Building	Fitness Room	General Construction	No Asbestos Located	0		No Action Required	T2
23	16/12/04	Main Building	Male Changing Room	General Construction	No Asbestos Located	0		No Action Required	T2
24	16/12/04	Main Building	Plant Room	General Construction	No Asbestos Located	0		No Action Required	T2
25	16/12/04	Main Building	Bonspiel Hallway	Floor tile	NADIS	0	Lab sample no. 03039	No Action Required	T2
26	16/12/04	Main Building	Bonspiel Bar	Textured coating	NADIS	0	Lab sample no. 03040	No Action Required	T2
27	16/12/04	Main Building	Service Lift Motor Room	General Construction	No Asbestos Located	0		No Action Required	T2
28	16/12/04	Main Building	Squash Court Viewing Area	Floor tile	NADIS	0	Lab sample no. 03041	No Action Required	T2
<b>Ground floor</b>									
29	16/12/04	Main Building	Reception Office	Safe	Amosite/Chrysotile/Crocidolite	6	Some older units had materials within, that contained asbestos. Safe also located to the Managers Office.	Refer to Manufacturer	T2
30	16/12/04	Main Building	Bowling Area	General Construction	No Asbestos Located	0		No Action Required	T2
31	16/12/04	Main Building	Bowling Office	Electrical Panel	Amosite/Chrysotile/Crocidolite	5	Some older panels had woven flash pads within that sometimes contained asbestos.	Refer to Manufacturer	T2
32	16/12/04	Main Building	Bar/Kitchen	Textured coating	NADIS	0	Lab sample no. 03042	No Action Required	T2
33	16/12/04	Main Building	Kitchen	Electrical Panel	Amosite/Chrysotile/Crocidolite	5	Some older panels had woven flash pads within that sometimes contained asbestos.	Refer to Manufacturer	T2

Asbestos Handbook, Amosite/Chrysotile/Crocidolite 5, Some older panels had woven flash pads within that sometimes contained asbestos. software 2009



Asbestos Survey Report

								pads within that sometimes contained asbestos.	Manufacturer
34	16/12/04	Main Building	Plant Room	General Construction	No Asbestos Located	0		No Action Required	T2
35	16/12/04	Main Building	Cleaning Store	Floor tile	NADIS	0	Lab sample no. 03043	No Action Required	T2
36	16/12/04	Main Building	Sauna	General Construction	No Asbestos Located	0		No Action Required	T2
37	16/12/04	Main Building	Ice Rink Office	General Construction	No Asbestos Located	0		No Action Required	T2
38	16/12/04	Main Building	Ice Rink Hall	General Construction	No Asbestos Located	0		No Action Required	T2
39	16/12/04	Main Building	Plant Room Motors	General Construction	No Asbestos Located	0		No Action Required	T2
40	16/12/04	Main Building	Games Room Store	Electrical Panel	Amosite/Chrysotile/Crocidolite	5	Some older panels had woven flash pads within that sometimes contained asbestos.	Refer to Manufacturer	T2

## Section 4

### 1. Material Assessment Records

**MATERIAL AND PRIORITY ASSESSMENT RECORD**

**CLIENT** Galleon Centre,  
99 Titchfield Street,  
Kilmarnock.  
KA1 1QY

**SITE** 99 Titchfield Street,  
Kilmarnock.  
KA1 1QY

---

<b><u>SAMPLE REF.</u></b>	22	<b><u>SURVEY TYPE</u></b>	T2
<b><u>DATE TAKEN</u></b>	16/12/04	<b><u>ASBESTOS TYPE</u></b>	No Asbestos Located
<b><u>AREA</u></b>	Main Building	<b><u>ANALYSIS</u></b>	NADIS
<b><u>FLOOR</u></b>	First floor	<b><u>CONDITION</u></b>	NADIS
<b><u>ROOM</u></b>	Fitness Room	<b><u>FRIABILITY</u></b>	NADIS
<b><u>COMPONENT</u></b>	General Construction	<b><u>POSITION</u></b>	NADIS
<b><u>SURVEYOR</u></b>	Carl Ashton	<b><u>TREATMENT</u></b>	NADIS
<b><u>LAB</u></b>		<b><u>MATERIAL RISK</u></b>	0 (NADIS)
<b><u>NEXT INSPECTION</u></b>		<b><u>PRIORITY RISK</u></b>	0 (NFA)
<b><u>REMOVAL COST</u></b>			
<b><u>ACTION</u></b>	No Action Required		



**RECOMMENDATIONS**

**MATERIAL AND PRIORITY ASSESSMENT RECORD**

**CLIENT** Galleon Centre,  
99 Titchfield Street,  
Kilmarnock.  
KA1 1QY

**SITE** 99 Titchfield Street,  
Kilmarnock.  
KA1 1QY

---

<b><u>SAMPLE REF.</u></b>	23	<b><u>SURVEY TYPE</u></b>	T2
<b><u>DATE TAKEN</u></b>	16/12/04	<b><u>ASBESTOS TYPE</u></b>	No Asbestos Located
<b><u>AREA</u></b>	Main Building	<b><u>ANALYSIS</u></b>	NADIS
<b><u>FLOOR</u></b>	First floor	<b><u>CONDITION</u></b>	NADIS
<b><u>ROOM</u></b>	Male Changing Room	<b><u>FRIABILITY</u></b>	NADIS
<b><u>COMPONENT</u></b>	General Construction	<b><u>POSITION</u></b>	NADIS
<b><u>SURVEYOR</u></b>	Carl Ashton	<b><u>TREATMENT</u></b>	NADIS
<b><u>LAB</u></b>		<b><u>MATERIAL RISK</u></b>	0 (NADIS)
<b><u>NEXT INSPECTION</u></b>		<b><u>PRIORITY RISK</u></b>	0 (NFA)
<b><u>REMOVAL COST</u></b>			
<b><u>ACTION</u></b>	No Action Required		



**RECOMMENDATIONS**

**MATERIAL AND PRIORITY ASSESSMENT RECORD**

**CLIENT** Galleon Centre,  
99 Titchfield Street,  
Kilmarnock.  
KA1 1QY

**SITE** 99 Titchfield Street,  
Kilmarnock.  
KA1 1QY

---

<b><u>SAMPLE REF.</u></b>	24	<b><u>SURVEY TYPE</u></b>	T2
<b><u>DATE TAKEN</u></b>	16/12/04	<b><u>ASBESTOS TYPE</u></b>	No Asbestos Located
<b><u>AREA</u></b>	Main Building	<b><u>ANALYSIS</u></b>	NADIS
<b><u>FLOOR</u></b>	First floor	<b><u>CONDITION</u></b>	NADIS
<b><u>ROOM</u></b>	Plant Room	<b><u>FRIABILITY</u></b>	NADIS
<b><u>COMPONENT</u></b>	General Construction	<b><u>POSITION</u></b>	NADIS
<b><u>SURVEYOR</u></b>	Carl Ashton	<b><u>TREATMENT</u></b>	NADIS
<b><u>LAB</u></b>		<b><u>MATERIAL RISK</u></b>	0 (NADIS)
<b><u>NEXT INSPECTION</u></b>		<b><u>PRIORITY RISK</u></b>	0 (NFA)
<b><u>REMOVAL COST</u></b>			
<b><u>ACTION</u></b>	No Action Required		



**RECOMMENDATIONS**

**MATERIAL AND PRIORITY ASSESSMENT RECORD**

**CLIENT** Galleon Centre,  
99 Titchfield Street,  
Kilmarnock.  
KA1 1QY

**SITE** 99 Titchfield Street,  
Kilmarnock.  
KA1 1QY

---

<b><u>SAMPLE REF.</u></b>	25	<b><u>SURVEY TYPE</u></b>	T2
<b><u>DATE TAKEN</u></b>	16/12/04	<b><u>ASBESTOS TYPE</u></b>	NADIS
<b><u>AREA</u></b>	Main Building	<b><u>ANALYSIS</u></b>	NADIS
<b><u>FLOOR</u></b>	First floor	<b><u>CONDITION</u></b>	NADIS
<b><u>ROOM</u></b>	Bonspiel Hallway	<b><u>FRIABILITY</u></b>	NADIS
<b><u>COMPONENT</u></b>	Floor tile	<b><u>POSITION</u></b>	NADIS
<b><u>SURVEYOR</u></b>	Carl Ashton	<b><u>TREATMENT</u></b>	NADIS
<b><u>LAB</u></b>	TVS Analysis Ltd	<b><u>MATERIAL RISK</u></b>	0 (NADIS)
<b><u>NEXT INSPECTION</u></b>		<b><u>PRIORITY RISK</u></b>	0 (NFA)
<b><u>REMOVAL COST</u></b>			
<b><u>ACTION</u></b>	No Action Required		



**RECOMMENDATIONS**  
Lab sample no. 03039

**MATERIAL AND PRIORITY ASSESSMENT RECORD**

**CLIENT** Galleon Centre,  
99 Titchfield Street,  
Kilmarnock.  
KA1 1QY

**SITE** 99 Titchfield Street,  
Kilmarnock.  
KA1 1QY

---

<b><u>SAMPLE REF.</u></b>	26	<b><u>SURVEY TYPE</u></b>	T2
<b><u>DATE TAKEN</u></b>	16/12/04	<b><u>ASBESTOS TYPE</u></b>	NADIS
<b><u>AREA</u></b>	Main Building	<b><u>ANALYSIS</u></b>	NADIS
<b><u>FLOOR</u></b>	First floor	<b><u>CONDITION</u></b>	NADIS
<b><u>ROOM</u></b>	Bonspiel Bar	<b><u>FRIABILITY</u></b>	NADIS
<b><u>COMPONENT</u></b>	Textured coating	<b><u>POSITION</u></b>	NADIS
<b><u>SURVEYOR</u></b>	Carl Ashton	<b><u>TREATMENT</u></b>	NADIS
<b><u>LAB</u></b>	TVS Analysis Ltd	<b><u>MATERIAL RISK</u></b>	0 (NADIS)
<b><u>NEXT INSPECTION</u></b>		<b><u>PRIORITY RISK</u></b>	0 (NFA)
<b><u>REMOVAL COST</u></b>			
<b><u>ACTION</u></b>	No Action Required		



**RECOMMENDATIONS**  
Lab sample no. 03040



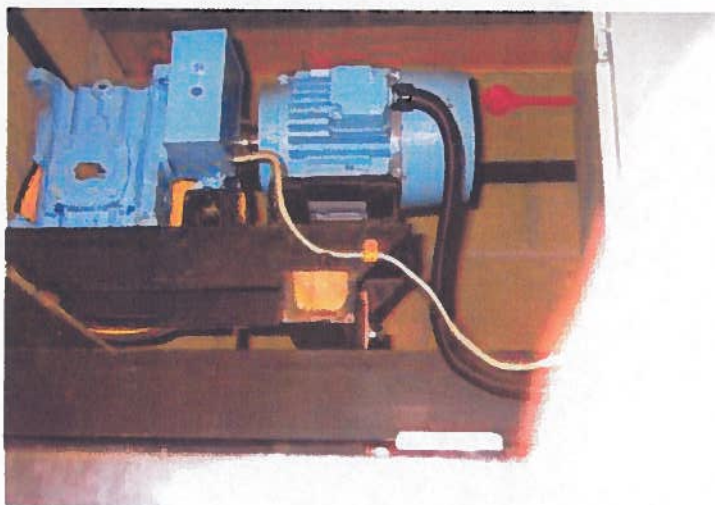
**MATERIAL AND PRIORITY ASSESSMENT RECORD**

**CLIENT** Galleon Centre,  
99 Titchfield Street,  
Kilmarnock.  
KA1 1QY

**SITE** 99 Titchfield Street,  
Kilmarnock.  
KA1 1QY

---

<b><u>SAMPLE REF.</u></b>	27	<b><u>SURVEY TYPE</u></b>	T2
<b><u>DATE TAKEN</u></b>	16/12/04	<b><u>ASBESTOS TYPE</u></b>	No Asbestos Located
<b><u>AREA</u></b>	Main Building	<b><u>ANALYSIS</u></b>	NADIS
<b><u>FLOOR</u></b>	First floor	<b><u>CONDITION</u></b>	NADIS
<b><u>ROOM</u></b>	Service Lift Motor Room	<b><u>FRIABILITY</u></b>	NADIS
<b><u>COMPONENT</u></b>	General Construction	<b><u>POSITION</u></b>	NADIS
<b><u>SURVEYOR</u></b>	Carl Ashton	<b><u>TREATMENT</u></b>	NADIS
<b><u>LAB</u></b>		<b><u>MATERIAL RISK</u></b>	0 (NADIS)
<b><u>NEXT INSPECTION</u></b>		<b><u>PRIORITY RISK</u></b>	0 (NFA)
<b><u>REMOVAL COST</u></b>			
<b><u>ACTION</u></b>	No Action Required		



**RECOMMENDATIONS**



**MATERIAL AND PRIORITY ASSESSMENT RECORD**

<b><u>CLIENT</u></b>	Galleon Centre, 99 Titchfield Street, Kilmarnock. KA1 1QY	<b><u>SITE</u></b>	99 Titchfield Street, Kilmarnock. KA1 1QY
----------------------	--	--------------------	---

<b><u>SAMPLE REF.</u></b>	28	<b><u>SURVEY TYPE</u></b>	T2
<b><u>DATE TAKEN</u></b>	16/12/04	<b><u>ASBESTOS TYPE</u></b>	NADIS
<b><u>AREA</u></b>	Main Building	<b><u>ANALYSIS</u></b>	NADIS
<b><u>FLOOR</u></b>	First floor	<b><u>CONDITION</u></b>	NADIS
<b><u>ROOM</u></b>	Squash Court Viewing Area	<b><u>FRIABILITY</u></b>	NADIS
<b><u>COMPONENT</u></b>	Floor tile	<b><u>POSITION</u></b>	NADIS
<b><u>SURVEYOR</u></b>	Carl Ashton	<b><u>TREATMENT</u></b>	NADIS
<b><u>LAB</u></b>	TVS Analysis Ltd	<b><u>MATERIAL RISK</u></b>	0 (NADIS)
<b><u>NEXT INSPECTION</u></b>		<b><u>PRIORITY RISK</u></b>	0 (NFA)
<b><u>REMOVAL COST</u></b>			
<b><u>ACTION</u></b>	No Action Required		



**RECOMMENDATIONS**  
Lab sample no. 03041

**MATERIAL AND PRIORITY ASSESSMENT RECORD**

<b><u>CLIENT</u></b>	Galleon Centre, 99 Titchfield Street, Kilmarnock. KA1 1QY	<b><u>SITE</u></b>	99 Titchfield Street, Kilmarnock. KA1 1QY
----------------------	--	--------------------	---

---

<b><u>SAMPLE REF.</u></b>	29	<b><u>SURVEY TYPE</u></b>	T2
<b><u>DATE TAKEN</u></b>	16/12/04	<b><u>ASBESTOS TYPE</u></b>	Amosite/Chrysotile/Crocidolite
<b><u>AREA</u></b>	Main Building	<b><u>ANALYSIS</u></b>	Assumed Medium
<b><u>FLOOR</u></b>	Ground floor	<b><u>CONDITION</u></b>	Good
<b><u>ROOM</u></b>	Reception Office	<b><u>FRIABILITY</u></b>	Low
<b><u>COMPONENT</u></b>	Safe	<b><u>POSITION</u></b>	Internal
<b><u>SURVEYOR</u></b>	Carl Ashton	<b><u>TREATMENT</u></b>	Sealed
<b><u>LAB</u></b>		<b><u>MATERIAL RISK</u></b>	6 (Very Low)
<b><u>NEXT INSPECTION</u></b>	20/12/05	<b><u>PRIORITY RISK</u></b>	0 (NFA)
<b><u>REMOVAL COST</u></b>			
<b><u>ACTION</u></b>	Refer to Manufacturer		



**RECOMMENDATIONS**  
 Some older units had materials within, that contained asbestos.  
 Safe also located to the Managers Office.

**MATERIAL AND PRIORITY ASSESSMENT RECORD**

**CLIENT** Galleon Centre,  
99 Titchfield Street,  
Kilmarnock.  
KA1 1QY

**SITE** 99 Titchfield Street,  
Kilmarnock.  
KA1 1QY

---

<b><u>SAMPLE REF.</u></b>	30	<b><u>SURVEY TYPE</u></b>	T2
<b><u>DATE TAKEN</u></b>	16/12/04	<b><u>ASBESTOS TYPE</u></b>	No Asbestos Located
<b><u>AREA</u></b>	Main Building	<b><u>ANALYSIS</u></b>	NADIS
<b><u>FLOOR</u></b>	Ground floor	<b><u>CONDITION</u></b>	NADIS
<b><u>ROOM</u></b>	Bowling Area	<b><u>FRIABILITY</u></b>	NADIS
<b><u>COMPONENT</u></b>	General Construction	<b><u>POSITION</u></b>	NADIS
<b><u>SURVEYOR</u></b>	Carl Ashton	<b><u>TREATMENT</u></b>	NADIS
<b><u>LAB</u></b>		<b><u>MATERIAL RISK</u></b>	0 (NADIS)
<b><u>NEXT INSPECTION</u></b>		<b><u>PRIORITY RISK</u></b>	0 (NFA)
<b><u>REMOVAL COST</u></b>			
<b><u>ACTION</u></b>	No Action Required		



**RECOMMENDATIONS**



**MATERIAL AND PRIORITY ASSESSMENT RECORD**

<b><u>CLIENT</u></b>	Galleon Centre, 99 Titchfield Street, Kilmamock. KA1 1QY	<b><u>SITE</u></b>	99 Titchfield Street, Kilmamock. KA1 1QY
----------------------	---	--------------------	--

---

<b><u>SAMPLE REF.</u></b>	32	<b><u>SURVEY TYPE</u></b>	T2
<b><u>DATE TAKEN</u></b>	16/12/04	<b><u>ASBESTOS TYPE</u></b>	NADIS
<b><u>AREA</u></b>	Main Building	<b><u>ANALYSIS</u></b>	NADIS
<b><u>FLOOR</u></b>	Ground floor	<b><u>CONDITION</u></b>	NADIS
<b><u>ROOM</u></b>	Bar/Kitchen	<b><u>FRIABILITY</u></b>	NADIS
<b><u>COMPONENT</u></b>	Textured coating	<b><u>POSITION</u></b>	NADIS
<b><u>SURVEYOR</u></b>	Carl Ashton	<b><u>TREATMENT</u></b>	NADIS
<b><u>LAB</u></b>	TVS Analysis Ltd	<b><u>MATERIAL RISK</u></b>	0 (NADIS)
<b><u>NEXT INSPECTION</u></b>		<b><u>PRIORITY RISK</u></b>	0 (NFA)
<b><u>REMOVAL COST</u></b>			
<b><u>ACTION</u></b>	No Action Required		

**RECOMMENDATIONS**  
Lab sample no. 03042







**MATERIAL AND PRIORITY ASSESSMENT RECORD**

**CLIENT** Galleon Centre,  
99 Titchfield Street,  
Kilmarnock.  
KA1 1QY

**SITE** 99 Titchfield Street,  
Kilmarnock.  
KA1 1QY

---

<b><u>SAMPLE REF.</u></b>	35	<b><u>SURVEY TYPE</u></b>	T2
<b><u>DATE TAKEN</u></b>	16/12/04	<b><u>ASBESTOS TYPE</u></b>	NADIS
<b><u>AREA</u></b>	Main Building	<b><u>ANALYSIS</u></b>	NADIS
<b><u>FLOOR</u></b>	Ground floor	<b><u>CONDITION</u></b>	NADIS
<b><u>ROOM</u></b>	Cleaning Store	<b><u>FRIABILITY</u></b>	NADIS
<b><u>COMPONENT</u></b>	Floor tile	<b><u>POSITION</u></b>	NADIS
<b><u>SURVEYOR</u></b>	Carl Ashton	<b><u>TREATMENT</u></b>	NADIS
<b><u>LAB</u></b>	TVS Analysis Ltd	<b><u>MATERIAL RISK</u></b>	0 (NADIS)
<b><u>NEXT INSPECTION</u></b>		<b><u>PRIORITY RISK</u></b>	0 (NFA)
<b><u>REMOVAL COST</u></b>			
<b><u>ACTION</u></b>	No Action Required		



**RECOMMENDATIONS**  
Lab sample no. 03043

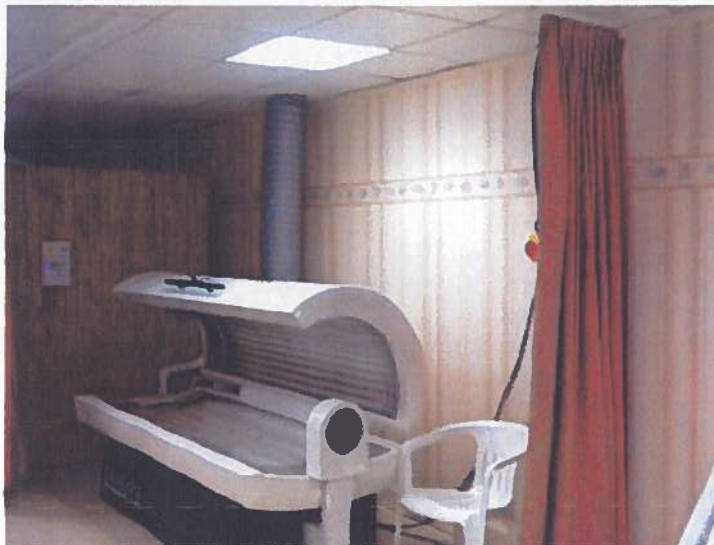


**MATERIAL AND PRIORITY ASSESSMENT RECORD**

<b><u>CLIENT</u></b>	Galleon Centre, 99 Titchfield Street, Kilmarnock. KA1 1QY	<b><u>SITE</u></b>	99 Titchfield Street, Kilmarnock. KA1 1QY
----------------------	--	--------------------	---

---

<b><u>SAMPLE REF.</u></b>	36	<b><u>SURVEY TYPE</u></b>	T2
<b><u>DATE TAKEN</u></b>	16/12/04	<b><u>ASBESTOS TYPE</u></b>	No Asbestos Located
<b><u>AREA</u></b>	Main Building	<b><u>ANALYSIS</u></b>	NADIS
<b><u>FLOOR</u></b>	Ground floor	<b><u>CONDITION</u></b>	NADIS
<b><u>ROOM</u></b>	Sauna	<b><u>FRIABILITY</u></b>	NADIS
<b><u>COMPONENT</u></b>	General Construction	<b><u>POSITION</u></b>	NADIS
<b><u>SURVEYOR</u></b>	Carl Ashton	<b><u>TREATMENT</u></b>	NADIS
<b><u>LAB</u></b>		<b><u>MATERIAL RISK</u></b>	0 (NADIS)
<b><u>NEXT INSPECTION</u></b>		<b><u>PRIORITY RISK</u></b>	0 (NFA)
<b><u>REMOVAL COST</u></b>			
<b><u>ACTION</u></b>	No Action Required		



**RECOMMENDATIONS**

**MATERIAL AND PRIORITY ASSESSMENT RECORD**

**CLIENT** Galleon Centre,  
99 Titchfield Street,  
Kilmarnock.  
KA1 1QY

**SITE** 99 Titchfield Street,  
Kilmarnock.  
KA1 1QY

---

<b><u>SAMPLE REF.</u></b>	37	<b><u>SURVEY TYPE</u></b>	T2
<b><u>DATE TAKEN</u></b>	16/12/04	<b><u>ASBESTOS TYPE</u></b>	No Asbestos Located
<b><u>AREA</u></b>	Main Building	<b><u>ANALYSIS</u></b>	NADIS
<b><u>FLOOR</u></b>	Ground floor	<b><u>CONDITION</u></b>	NADIS
<b><u>ROOM</u></b>	Ice Rink Office	<b><u>FRIABILITY</u></b>	NADIS
<b><u>COMPONENT</u></b>	General Construction	<b><u>POSITION</u></b>	NADIS
<b><u>SURVEYOR</u></b>	Carl Ashton	<b><u>TREATMENT</u></b>	NADIS
<b><u>LAB</u></b>		<b><u>MATERIAL RISK</u></b>	0 (NADIS)
<b><u>NEXT INSPECTION</u></b>		<b><u>PRIORITY RISK</u></b>	0 (NFA)
<b><u>REMOVAL COST</u></b>			
<b><u>ACTION</u></b>	No Action Required		



**RECOMMENDATIONS**

**MATERIAL AND PRIORITY ASSESSMENT RECORD**

**CLIENT** Galleon Centre,  
99 Titchfield Street,  
Kilmarnock.  
KA1 1QY

**SITE** 99 Titchfield Street,  
Kilmarnock.  
KA1 1QY

---

<b><u>SAMPLE REF.</u></b>	38	<b><u>SURVEY TYPE</u></b>	T2
<b><u>DATE TAKEN</u></b>	16/12/04	<b><u>ASBESTOS TYPE</u></b>	No Asbestos Located
<b><u>AREA</u></b>	Main Building	<b><u>ANALYSIS</u></b>	NADIS
<b><u>FLOOR</u></b>	Ground floor	<b><u>CONDITION</u></b>	NADIS
<b><u>ROOM</u></b>	Ice Rink Hall	<b><u>FRIABILITY</u></b>	NADIS
<b><u>COMPONENT</u></b>	General Construction	<b><u>POSITION</u></b>	NADIS
<b><u>SURVEYOR</u></b>	Carl Ashton	<b><u>TREATMENT</u></b>	NADIS
<b><u>LAB</u></b>		<b><u>MATERIAL RISK</u></b>	0 (NADIS)
<b><u>NEXT INSPECTION</u></b>		<b><u>PRIORITY RISK</u></b>	0 (NFA)
<b><u>REMOVAL COST</u></b>			
<b><u>ACTION</u></b>	No Action Required		



**RECOMMENDATIONS**

**MATERIAL AND PRIORITY ASSESSMENT RECORD**

**CLIENT** Galleon Centre,  
99 Titchfield Street,  
Kilmarnock.  
KA1 1QY

**SITE** 99 Titchfield Street,  
Kilmarnock.  
KA1 1QY

---

<b><u>SAMPLE REF.</u></b>	39	<b><u>SURVEY TYPE</u></b>	T2
<b><u>DATE TAKEN</u></b>	16/12/04	<b><u>ASBESTOS TYPE</u></b>	No Asbestos Located
<b><u>AREA</u></b>	Main Building	<b><u>ANALYSIS</u></b>	NADIS
<b><u>FLOOR</u></b>	Ground floor	<b><u>CONDITION</u></b>	NADIS
<b><u>ROOM</u></b>	Plant Room Motors	<b><u>FRIABILITY</u></b>	NADIS
<b><u>COMPONENT</u></b>	General Construction	<b><u>POSITION</u></b>	NADIS
<b><u>SURVEYOR</u></b>	Carl Ashton	<b><u>TREATMENT</u></b>	NADIS
<b><u>LAB</u></b>		<b><u>MATERIAL RISK</u></b>	0 (NADIS)
<b><u>NEXT INSPECTION</u></b>		<b><u>PRIORITY RISK</u></b>	0 (NFA)
<b><u>REMOVAL COST</u></b>			
<b><u>ACTION</u></b>	No Action Required		



**RECOMMENDATIONS**



**MATERIAL AND PRIORITY ASSESSMENT RECORD**

<b><u>CLIENT</u></b>	Galleon Centre, 99 Titchfield Street, Kilmarnock. KA1 1QY	<b><u>SITE</u></b>	99 Titchfield Street, Kilmarnock. KA1 1QY
----------------------	--	--------------------	---

---

<b><u>SAMPLE REF.</u></b>	40	<b><u>SURVEY TYPE</u></b>	T2
<b><u>DATE TAKEN</u></b>	16/12/04	<b><u>ASBESTOS TYPE</u></b>	Amosite/Chrysotile/Crocidolite
<b><u>AREA</u></b>	Main Building	<b><u>ANALYSIS</u></b>	Assumed Low
<b><u>FLOOR</u></b>	Ground floor	<b><u>CONDITION</u></b>	Good
<b><u>ROOM</u></b>	Games Room Store	<b><u>FRIABILITY</u></b>	Low
<b><u>COMPONENT</u></b>	Electrical Panel	<b><u>POSITION</u></b>	Internal
<b><u>SURVEYOR</u></b>	Carl Ashton	<b><u>TREATMENT</u></b>	None
<b><u>LAB</u></b>		<b><u>MATERIAL RISK</u></b>	5 (Very Low)
<b><u>NEXT INSPECTION</u></b>	20/12/05	<b><u>PRIORITY RISK</u></b>	0 (NFA)
<b><u>REMOVAL COST</u></b>			
<b><u>ACTION</u></b>	Refer to Manufacturer		



**RECOMMENDATIONS**

Some older panels had woven flash pads within that sometimes contained asbestos.



**For further information please contact:**

Trojan Services Limited  
First Floor  
10 St. Andrews Road South  
Lytham St. Annes  
Lancashire  
FY8 1SR  
Tel: 0151 420 9111